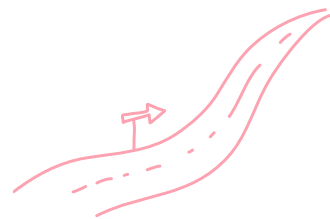




FAMILY HOLIDAY PROGRAMME



2023-2024



CATERPILLAR SCHOOL BALI

+62 821-3909- 5590

contact@caterpillarschoolbali.com

<https://www.caterpillarschoolbali.com/>



Welcome to Bali, the World's Second Most Popular Destination for 2023.

Caterpillar School Bali is thrilled to introduce 'Family Holiday Programme'.

This programme offers your child with the unique opportunity to join us and spend the 'Family Holiday Programme' with us as a full-time student.

Your child will be integrated in all lessons, will have the opportunity to get to know our students and staff and be involved in all aspects of school life.



WHAT IS FAMILY HOLIDAY PROGRAMME?

EXPLORE BALI WITH OUR UNIQUE FAMILY HOLIDAY PROGRAMME!

ARE YOU LOOKING FOR AN UNFORGETTABLE FAMILY HOLIDAY IN BALI THAT COMBINES ADVENTURE AND EDUCATION? LOOK NO FURTHER!



DISCOVER & LEARN: OUR PROGRAMME NOT ONLY OFFERS SUPERVISED CHILDCARE BUT ALSO NURTURES YOUR CHILD'S NATURAL CURIOSITY AND LOVE FOR THE ENVIRONMENT. WE'VE BLENDED THE WORLD-RENOWNED FINNISH EARLY CHILDHOOD EDUCATION CURRICULUM WITH THE PRESTIGIOUS BRITISH CURRICULUM TO CREATE A TRULY ENRICHING EXPERIENCE.



FLEXIBLE ENROLLMENT: YOUR FAMILY CAN JOIN US AT ANY TIME DURING THE SCHOOL YEAR. CHOOSE FROM OUR FLEXIBLE PACKAGES: FOUR WEEKS, SIX WEEKS, OR A FULL TEN-WEEK ADVENTURE!

MAKE YOUR FAMILY'S BALI HOLIDAY AN EDUCATIONAL JOURNEY LIKE NO OTHER.



WHAT IS INCLUDED IN THE PROGRAMME?

1
5 days per week,
full day

2
Healthy snacks &
vegetarian lunch.

3
Swimming and music
lessons.

4
School events

5
Access to Seesaw (the
interactive learning platform
between the school and the
parents)

*only for 6 weeks and 10 weeks
programme

6
Access to our parents'
Community WhatsApp
group.

*only for 6 weeks and 10 weeks
programme

7
Evaluation report
after finishing the
programme.

8
School T-shirt
Uniforms

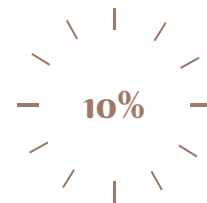


DISCOUNTS

Parents with more than one child will be afforded a discount. The discount will be exclusively on school fee and will work as follows:



The second sibling will receive 5% discount on total fee.



The third sibling will receive 10% discount on total fee.



CLASS SCHEDULE

Drop-off start at 08:30 am

NURSERY 1

Monday – Friday
(9:00 -14:00)

NURSERY 2

Monday – Friday
(9:00 -14:00)

PRE-K

Monday – Friday
(9:00 -14:00)

JUNIOR KINDERGARTEN

Monday – Friday
(9:00 -14:00)

K1/E1

Monday – Friday
(9:00 -14:15)

K2/E2

Monday – Friday
(9:00 -14:15)





4
WEEKS

PRICING INFORMATION

NURSERY 1 & 2 (15 MONTHS - 2 YEARS OLD)

IDR 12.725.600

PRE-K (3 TO 4 YEARS OLD)

IDR 12.963.200

JUNIOR KINDERGARTEN (4 TO 5 YEARS OLD)

IDR 13.544.000

K1/E2 (5 TO 6 YEARS OLD)

IDR 14.028.000

K2/E2 (6 TO 7 YEARS OLD)

IDR 14.358.000

* Please noted that all fees are non-refundable.



6
WEEKS

PRICING INFORMATION

NURSERY 1 & 2 (15 MONTHS - 2 YEARS OLD)
IDR 18.938.400

PRE-K (3 TO 4 YEARS OLD)
IDR 19.294.800

JUNIOR KINDERGARTEN (4 TO 5 YEARS OLD)
IDR 20.166.000

K1/E2 (5 TO 6 YEARS OLD)
IDR 20.892.000



K2/E2 (6 TO 7 YEARS OLD)
IDR 21.387.000

* Please noted that all fees are non-refundable.





10
WEEKS


PRICING INFORMATION

NURSERY 1 & 2 (15 MONTHS - 2 YEARS OLD)
IDR 31.364.000

PRE-K (3 TO 4 YEARS OLD)
IDR 31.958.000

JUNIOR KINDERGARTEN (4 TO 5 YEARS OLD)
IDR 33.410.000

K1/E1 (5 TO 6 YEARS OLD)
IDR 34.620.000



K2/E2 (6 TO 7 YEARS OLD)
IDR 35.445.000

* Please noted that all fees are non-refundable.



METHODS OF PAYMENT

1. PAYMENT MUST BE MADE BY BANK TRANSFER, BANK DEPOSIT, OR THROUGH THE POINT-OF-SALE SYSTEM AVAILABLE AT THE SCHOOL.

2. PARENTS PAYING BY BANK TRANSFER OR BANK DEPOSIT MUST SEND THE PROOF OF PAYMENT TO THE SCHOOL. WHEN PAYING BY BANK TRANSFER AND OR BANK DEPOSIT THEN THE STUDENT'S NAME, SURNAME AND GRADE MUST BE MENTIONED. IF THESE DETAILS ARE NOT MENTIONED, THEN ANY SUCH PAYMENT WILL NOT BE ALLOCATED TO THE CORRECT STUDENT AND THE ACCOUNT IS AT RISK OF REFLECTING AS BEING IN ARREARS.

3. PAYMENT BY CASH SHOULD ONLY BE MADE IN PERSON AND A RECEIPT OBTAINED AT THAT TIME. WHERE CIRCUMSTANCES EXIST TO MAKE IT NECESSARY, ANY CLAIM THAT SCHOOL FEES WERE PAID IN CASH MUST BE SUPPORTED BY A SCHOOL RECEIPT.





REFUND

1. ABSENCE / ILLNESS

FEES ARE NOT REFUNDED FOR ANY DAYS MISSED DUE TO HOLIDAYS OR ABSENCE DURING TERM TIME.

2. CANCELLATION OF RESERVED PLACES

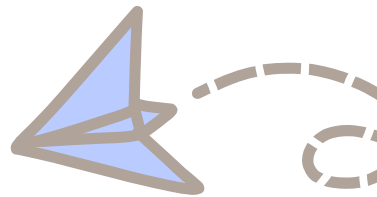
IN THE EVENT THAT YOU WISH TO CANCEL YOUR CHILD'S PLACE, PLEASE GIVE US 2 WEEKS NOTICE. THE REFUNDS YOU WILL RECEIVE IS MAXIMUM 50% OF THE TOTAL PAYMENT THAT HAVE BEEN PAID, WITH TERMS AND CONDITIONS APPLIED.

3. CLOSURES

IN THE EVENT THAT SCHOOL MUST CLOSE DUE, FOR EXAMPLE, TO ADVERSE WEATHER CONDITIONS, FEES WILL NOT BE REFUNDED.



WE LOOK FORWARD
TO WELCOMING YOU!



CATERPILLAR SCHOOL BALI

+62 821-3909- 5590

contact@caterpillarschoolbali.com

www.caterpillarschoolbali.com